

# POLY ARMOUR

High Performance Polyaspartic Coating System



-  SUPERIOR DURABILITY
-  LOW TEMPERATURE CURE
-  FAST RETURN TO SERVICE
-  NON YELLOWING UV STABLE
-  NO VOC & ODOR FREE AVAILABLE

330-682-5678

[WWW.POLYARMOUR.US](http://WWW.POLYARMOUR.US)



# Commercial & industrial resinous flooring



## POLY ARMOUR<sup>®</sup> coating systems

The quickest, most immediate way to create an attractive yet durable floor in most situations. Solid color or broadcast, It's the preferred choice with contractors for saving time and labor while providing that sought after combination of strength and beauty.

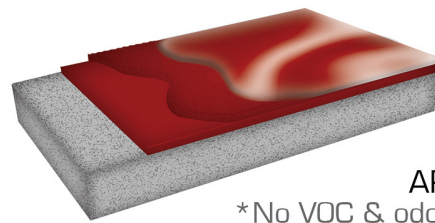
## POLY ARMOUR Advantages:

- One day installation
- Next day return to service
- Superior stain & chemical resistance
- UV stable - Non yellowing
- No VOC & odor free applications available
- Easy 1:1 mix ratio
- Extreme durability
- Low temperature cure
- No hot tire pick up





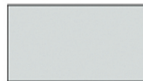
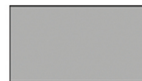


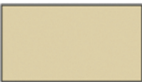
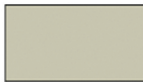



## ARMOUR TINT<sup>™</sup> solid color coatings

Solid color polyaspartic coating, great for commercial and industrial flooring application.



ARMOUR TINT<sup>™</sup>

\*No VOC & odor free available

			
White	Off White	Light Gray	Medium Gray
			
Dark Gray	Charcoal	Black	Canyon Clay
			
Sun Buff	Buff	Taupe	Arabian Sand
			
Brick Red	Tile Red	Safety Yellow	

Armour Tint pigments provide optimal color hide and performance.

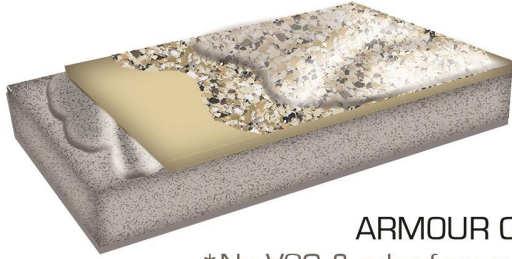




# Vinyl Chip seamless flooring

## ARMOUR CHIP™ seamless flooring

An individual terrazzo style finish, that affords owners reduced upkeep with continuing durability. Preferred in retail locations, schools and residential garages.

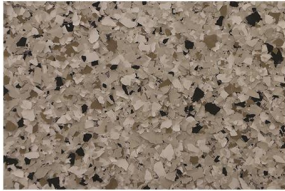


ARMOUR CHIP™

\*No VOC & odor free available



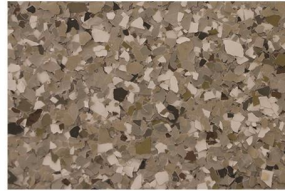
### STOCK BLENDS



CASTLE GATE  
TINT - SUN BUFF



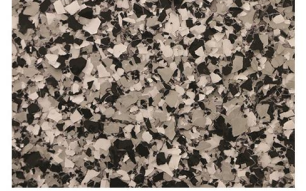
WATCH TOWER  
TINT - SUN BUFF



KINGS RANSOM  
TINT - BUFF



CAMELOT  
TINT - LIGHT GRAY

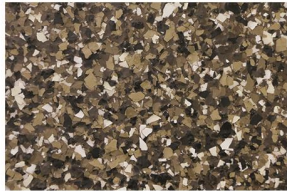


KNIGHTS TOWER  
TINT - LIGHT GRAY

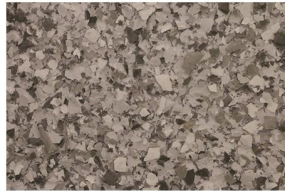
### CUSTOM BLENDS



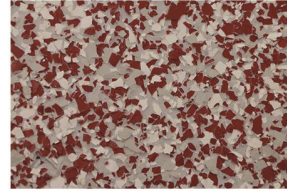
CLIFFS EDGE  
TINT - SUN BUFF



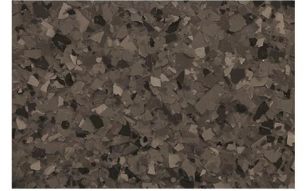
DRAW BRIDGE  
TINT - CANYON CLAY



CHAINMAIL  
TINT - BUFF

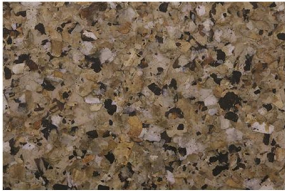


BUCKEYE  
TINT - LIGHT GRAY



GAUNTLET GRAY  
TINT - MEDIUM GRAY

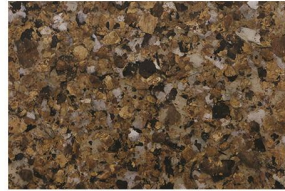
### PREMIUM MICA BLENDS



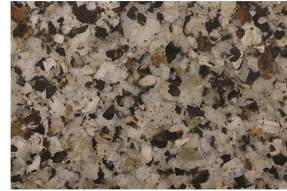
GOLD CREST  
TINT - SUN BUFF



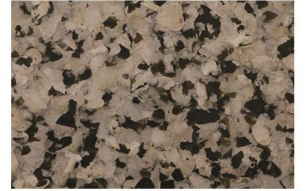
LEATHER  
TINT - CANYON CLAY



COPPER CRUSADE  
TINT - CANYON CLAY



GALLIANT  
TINT - BUFF



SILVER SABOR  
TINT - LIGHT GRAY



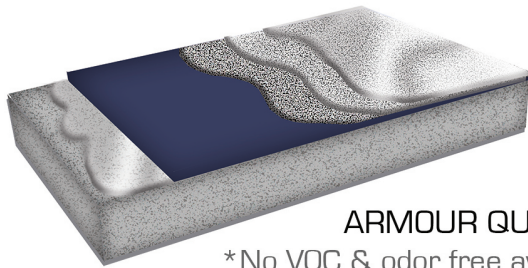


# Decorative concrete



## ARMOUR QUARTZ seamless flooring

High strength colored quartz aggregate stratified between POLY ARMOUR coats to create an attractively textured floor. Ideal for parking decks, stadiums and commercial kitchens.



ARMOUR QUARTZ™

\*No VOC & odor free available



SILVER SHADOW  
TINT - LIGHT GRAY



GRANITE  
TINT - MEDIUM GRAY



NATURAL BEIGE  
TINT - BUFF



PEBBLE BEACH  
TINT - BUFF



RIDGE VIEW  
TINT - CANYON CLAY

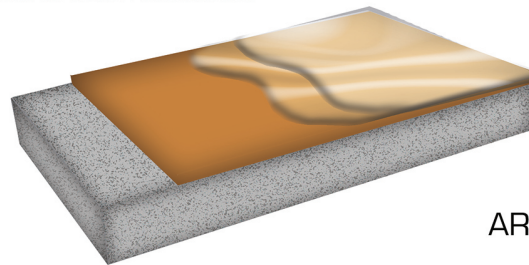


STREAM WOOD  
TINT - CANYON CLAY



## ARMOUR DYE decorative flooring

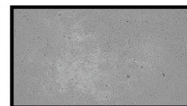
Uses liquid dispersed concrete dyes with POLY ARMOUR's coating system for a highly artistic yet durable surface. Often considered an alternative to polished concrete in situations requiring superior chemical & stain resistance.



ARMOUR DYE™



Light Gray



Medium Gray



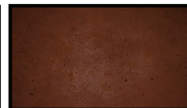
Sun Buff



Buff



Sand



Chocolate Brown



Burnt Sienna



Caramel



Saddle Brown



Slate Blue



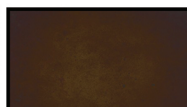
Terra Cotta



Midnight Black



Dixie Red



Walnut



Raw Sienna



Forest Green

Color samples are representations ONLY. Due to variations in concrete composition, age, surface conditions, surface prep, and application techniques, exact color may vary. Always test prior to use.



# Flooring Products

## Fast Cure & UV Stable Polyaspartics

### Poly Armour Clear 70, 80SC, 100

Crystal clear high performance sealer, durability unrivaled by other topcoats.

- Excellent Abrasion & Chemical Resistance
- Low Temperature Installation
- Low Odor Formula (Poly Armour 100)
- Slow Cure Option (Poly Armour 80SC)

### Poly Armour Tinted 70, 80SC, 100

For use when a solid colored coating with superior abrasion and chemical resistance is required.

- 14 popular colors

## Specialty Epoxies & Underlayments

### Poly Armour 100 Epoxy

User friendly high build 100% solids epoxy.

- Extended broadcast time
- Self Leveling - High build for smoothing rough concrete
- Use clear or tinted
- High Gloss finish

### Moisture Shield Epoxy Primer

Two part moisture tolerant epoxy primer.

- Protect against moisture emission failure
- Economically priced
- Recommended for all below grade applications

### Floor Flex

Single component fluid applied modified polyurethane traffic deck underlayment.

- Waterproof & Flexible
- Use over concrete, wood subfloor, and metal prior to application of any Deco-Crete coating or overlay system

## Broadcast Media & Aggregates

### Vinyl Color Chips

Enhanced durability & aesthetics for high performance flooring systems.

- Popular stock color blends
- Custom colors & blends available
- Added thickness and durability

### Quartz Colored Aggregate

Superior durability, aesthetics, and slip resistance for the most demanding environments.

- Popular stock color blends
- Custom colors & blends available
- Extreme durability in tough environments

### Mica Chips

Natural metallic flakes that glisten unlike any other broadcast media available.

- Beautiful stock color blends
- Limited colors & blends available
- Comparable durability to vinyl color chips

## Concrete Repair & Joint Filler

### Quick Fix

Extremely fast setting, high strength ultra low viscosity concrete repair material.

- Heavy loads in 10-15 minutes
- Rapidly fill control joints
- Rebuild deeply spalled or damaged concrete
- Use interior or exterior

### Polyurea Crack Bond

Dual component polyurea joint filler.

- Shaveable in as little as 45 minutes
- Install in temperatures as low as -40 F
- Use interior or exterior
- Allows 10-15% movement

### Cement All

Fast setting, multi-purpose concrete repair and non-shrink grout.

- Featheredge to 4" in one lift
- Sets in 15 minutes; structural strength in 1 hour
- Polishable

### Easy Patch

Concrete Repair and Resurfacing Mortar.

- Featheredge to 1.5" in one lift
- Sets in 20-45 minutes
- Light traffic in 3 to 4 hours

## Additives

### Armour Guard

Optional scratch additive.

- Dramatically increases abrasion resistance
- Does not impair clarity of clear coats

### Armour Grip

Traction additive for Poly Armour.

- Increased slip resistance
- Available in 40, 60, & 100 grit

## Stains & Stencils

### Armour Dye

Non-reactive permanent colorant for properly prepared concrete .

- 28 popular colors
- Interior and exterior formulas
- Fast drying

### Custom Stencils

Create custom logos, designs, and patterns.

- Used in conjunction with Kolour Dye
- Single use adhesive stencils
- Generated from your art file



# POLY ARMOUR SYSTEMS

POLY ARMOUR  
70, 80sc, 100



POLY ARMOUR  
short filled 70, 80sc, 100



100 EPOXY  
with tint pack



MOISTURE SHIELD



FLOOR FLEX



QUICK FIX



ARMOUR GUARD



ARMOUR GRIP



CRACK BOND



ARMOUR DYE



MICA/VINYL CHIPS



QUARTZ

